

LINX TT 1000 PRINTER



The Linx TT Series of thermal transfer overprinters provides an ideal printing solution onto flexible packaging across a wide variety of industrial applications.

Designed to deliver a low total cost of ownership and increase your production line output, the Linx TT Series printers are particularly suitable for printing consistent, error free best before dates, batch codes, barcodes, ingredients, logos and other product information.

With an advanced motor drive, enabling operation without compressed air, the Linx TT Series printers print up to 1000 mm/s at widths up to 107mm.



Low total cost of ownership

- ✓ Operates without compressed air reducing installation and operating costs while maintaining consistent print quality
- ✓ Increased range of printers and ribbons to better meet your application and production line printing needs
- ✓ Optimise ribbon usage with a choice of 3 ribbon saving modes



Increased uptime

- ✓ Quick and easy ribbon change with a lightweight, simple, push button cassette system
- ✓ Minimal ribbon change intervals and increased production line efficiency with ribbon lengths up to 1,200m
- ✓ Optimal number of user maintainable parts that are easy to replace



Ease of use

- ✓ Easy to set and maintain print quality with electronic pressure control
- ✓ Easy ribbon replacements with a simple cassette system designed to minimise errors
- ✓ Easy printer operation delivered by a responsive, intuitive graphic user interface

Linx TT 1000

CONTROLLER TOP ELEVATION



CONTROLLER FRONT ELEVATION



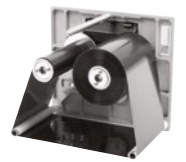
PRINTER 53MM



PRINTER 107MM



RIBBON CASSETTE



Technical Specification

PERFORMANCE

Intermittent and continuous mode in the same printer

Printhead characteristics:
53mm, 300dpi, 12 dots/mm;
107mm, 300dpi, 12 dots/mm

Print area - intermittent motion mode:
Up to 53mm (W) x 75mm (L) (53mm)
Up to 107mm (W) x 75mm (L) (107mm)

Print area - continuous motion mode:
Up to 53mm (W) x 300mm (L) (53mm)
Up to 107mm (W) x 300mm (L) (107mm)

Maximum throughput*:
Up to 700 prints per minute (53mm)
Up to 450 prints per minute (107mm)

Ribbon width:
20mm - 55mm (53mm)
55mm - 110mm (107mm)

Maximum ribbon length:
1200m

Ribbon gap between messages:
0.5mm nominal

Print speed* - intermittent motion mode:
10mm/sec - 800mm/sec (53mm)
10mm/sec - 600mm/sec (107mm)

Print speed* - continuous motion mode:
1mm/sec - 1000mm/sec (53mm)
1mm/sec - 1000mm/sec (107mm)

Cable length between printer and power supply unit: 3 metres (5m option)

GENERAL FEATURES

8.0" WVGA (800x480) LCD touch screen graphic user interface including WYSIWYG print preview

Clutchless bi-directional ribbon drive including ribbon consumption indicator and ribbon break/end of reel detection

Lightweight, simple, push button cassette design

On-board diagnostics including printhead health

3 levels of password protection

Multiple operator languages

*Print speeds and throughput are substrate, application and set-up dependent

PROGRAMMING AND PRINTING FEATURES

Linx CLARiSOFT® message design software

Full downloadable font support for Windows® TrueType® (including multiple languages and Unicode support)

Barcodes EAN-8, EAN-13, UPC-A, UPC-E, Code 39, EAN128, Code 128, ITF, PDF417, Data Matrix, QR, RSS (including 2D composite codes)

Fixed/variable/merged text and numeric fields

User enterable text and numeric fields

Auto incrementing/decrementing text, counters and barcodes

Basic shape drawing

Flexible date/time formats

Auto best before date calculation

Formats for shift coding

Multiple graphic formats supported - any size up to maximum print area

Link fields to databases

Field orientation 0°, 90°, 180°, 270°

Mirror image, image rotation, and inverse printing

Real time clock functions

User configurable drop down lists fields

Radial, intermittent stripes and interleaved images ribbon save functionality

MOUNTING OPTIONS

Universal bracket system for integrating printer into intermittent and continuous motion packaging machinery

RIBBON RANGE OPTIONS

Wax / Resin or Resin ink

Range of colours, lengths and widths

CONNECTIONS/INTERFACING FOR

External inputs (fully software configurable):
3 PNP inputs

External outputs (fully software configurable):
2 relay outputs and 2 PNP +24v outputs

RS232

Ethernet

USB memory stick support

Binary and ASCII communications

Host PC Mode (remote database) using CLARiNET® (option)

Claricom CLARiNET® coder independent network management software (option)

Link up to four TT 1000 printers to a single user interface

PHYSICAL CHARACTERISTICS

Air supply: No compressed air required

Humidity range: 85% max

Power supply: 100 - 240VAC, 50/60Hz

Operating temperature: 0° - 40°C

REGULATORY APPROVALS

CE

NRTL

FCC

Linx operates a policy of continuous product improvement and reserves the right to change the specification of products without notice.